



TOECON

since 1958



COMPANY OVERVIEW

Heritage and Evolution

The foundation of the company is deeply rooted in a distinguished legacy dating back to 1958 with the inception of TOEC Technical Office for Engineering and Contracting established by Eng. Medhat Aboukhater in Syria.

Decades later, TOECON was founded by Mr. Mamdouh Aboukhater to evolve and build upon this strong foundational heritage where he brings an extensive portfolio of successful and diverse projects to the firm.

With a strategic blend of technical proficiency stemming from his Civil Engineering background and business acumen strengthened by his Executive MBA, Mr. Aboukhater has positioned TOECON as a dynamic and forward-looking leader in heavy construction, committed to delivering exceptional results throughout the region.





GLOBAL ALLIANCES

TOECON has established robust, versatile working relationships with leading international partners and clients Including: Mitsubishi Heavy Industries • Siemens • Areva • Ericsson • Emaar • Sonatrach • BHEL • Man Diesel • Koch Dar Al Arkan • De Smet... etc.

TOECON has proved its capabilities and abilities to adopt the international standards and specifications, delivering complicated projects on time, as per planned budget and standards.





STRATEGIC COLLABORATION

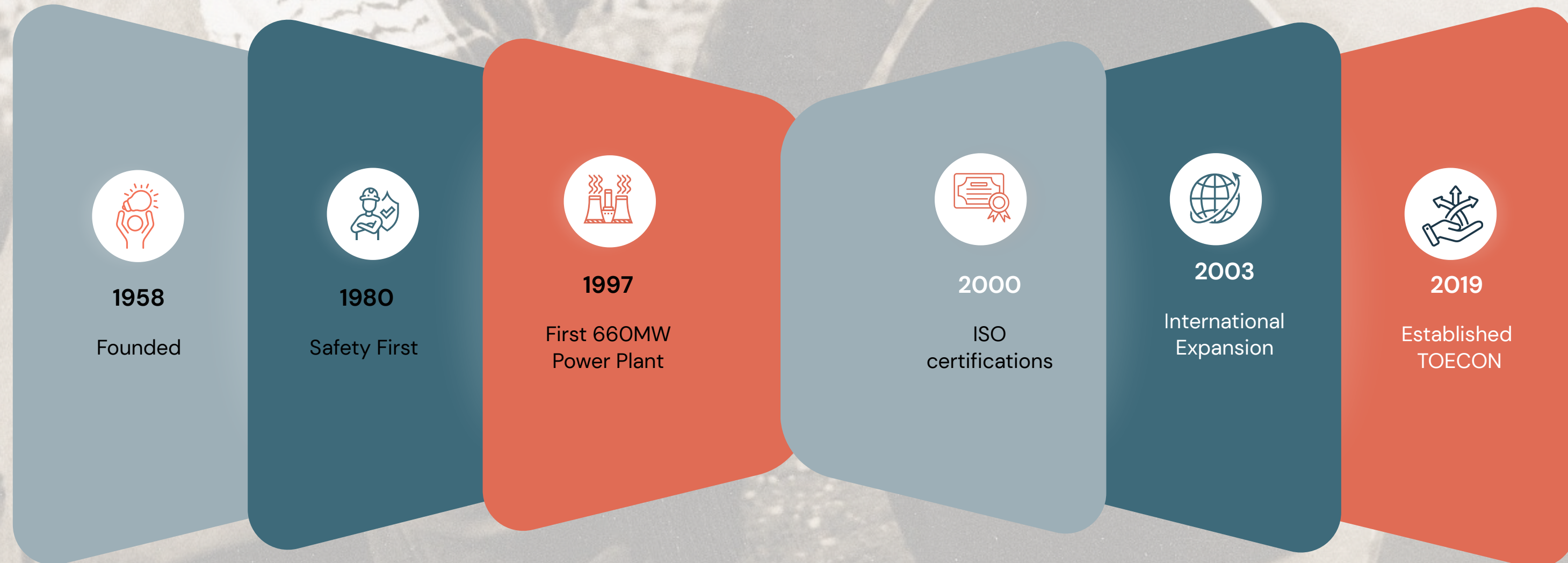
We operate with proven flexibility as a Main Contractor, Joint Venture partner, and Specialized Subcontractor, where we deliver high-precision works for global industry leaders by collaborating seamlessly with international technical teams. Our expertise is proven on complex projects in power generation, refineries, infrastructure, telecom, tunnels, dams, highways, commercial and residential complexes. Through decades we leveraged to ensure seamless Technical Integration in complex projects and facilitate a continual Knowledge Exchange, allowing us to adopt and implement international best practices for operational excellence.

[Home](#)[Service](#)[About Us](#)[Contact](#)

A Legacy of Continuous Excellence



Our legacy spans decades of landmark achievements that have strengthened our reputation for quality and engineering skill across the region. In 2019, Mr. Mamdouh Aboukhater built on this strong history by creating TOECON, carrying forward a vision of innovative and specialized engineering and contracting solutions.





PROJECT DIVERSITY & INTEGRATED CAPABILITIES



Oil & Gas Projects

Pipelines, refineries
rehabilitation, gas stations



Highway & Railway

Connecting major cities,
highways, bridges, railways



Power Plants

Gas, thermal, combined cycle,
steam, and diesel plants



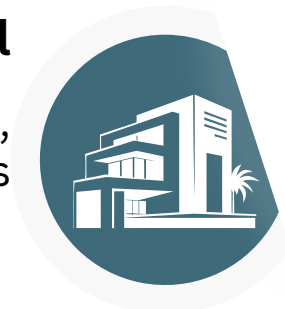
Infrastructure

Sewage networks, fiber optic,
public utilities



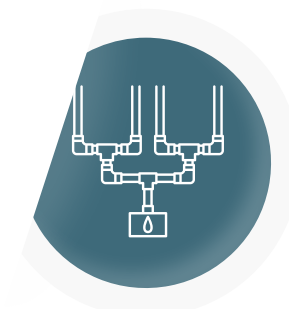
Commercial & Residential

Hospitals, housing, complexes, hotels,
universities, luxury developments



Water & Irrigation

Dams, canals, water and sewage,
treatment plants, supply systems



Industrial Projects

Factories, steel structures,
cement plants, chimneys



Specialized Construction

Slipform for conical chimney 200 m
height,
steel structure cooling tower 135 m
height,
tunnels, national fiber optic loops



Instrumentation

National Fiber optic loops, communication towers,
Scada system



CORE COMPETENCIES

65+

Years of Experience

5+

Countries of Operation

\$100M

Annual Turnover





65+ Years of Experience
Distinguished history of excellence since 1958



HSE Excellence
Exemplary safety records and standards



Global Presence
Operations in 5+ countries across regions



Expert Human Capital
Highly qualified personnel and technical teams



International Relations
With major industry leaders



Financial Capacity
\$100M annual turnover supporting major projects



Advanced Technology
State-of-the-art construction solutions



International Standards
ISO 9001, ISO 14001, OHSAS 18001 certified



Organizational Flexibility
Adaptable management and project approach



Strategic Alliance
Tie up with specialized contractor

Flagship Projects

[Home](#)

[About Us](#)

[Contact](#)



Specialized Technical Capabilities

TOECON, with leading global partners, delivers expertise in:

- Slip-form chimney construction 180 M conical shape
- Slip-form chimney construction 200 M with 25M dia prestressed concrete beams
- Heavy scaffolding and advanced formwork for complex structures
- Steel structure fabrication and erection for industrial facilities
- Cooling towers up to 135m high and 125m in dia
- Gas gathering stations and oil field facilities to global standards
- Turbine and HRSG erection (with Siemens and others)

Proven Legacy of Excellence and Expertise:

- .Over 65 years of industry experience
- .Delivered numerous strategic, high-impact projects across various sectors
- .Proven track record in large-scale, complex developments
- .Strong collaborations with leading international partners
- .Expertise in executing specialized projects of exceptional scale and complexity





Oil & Gaz





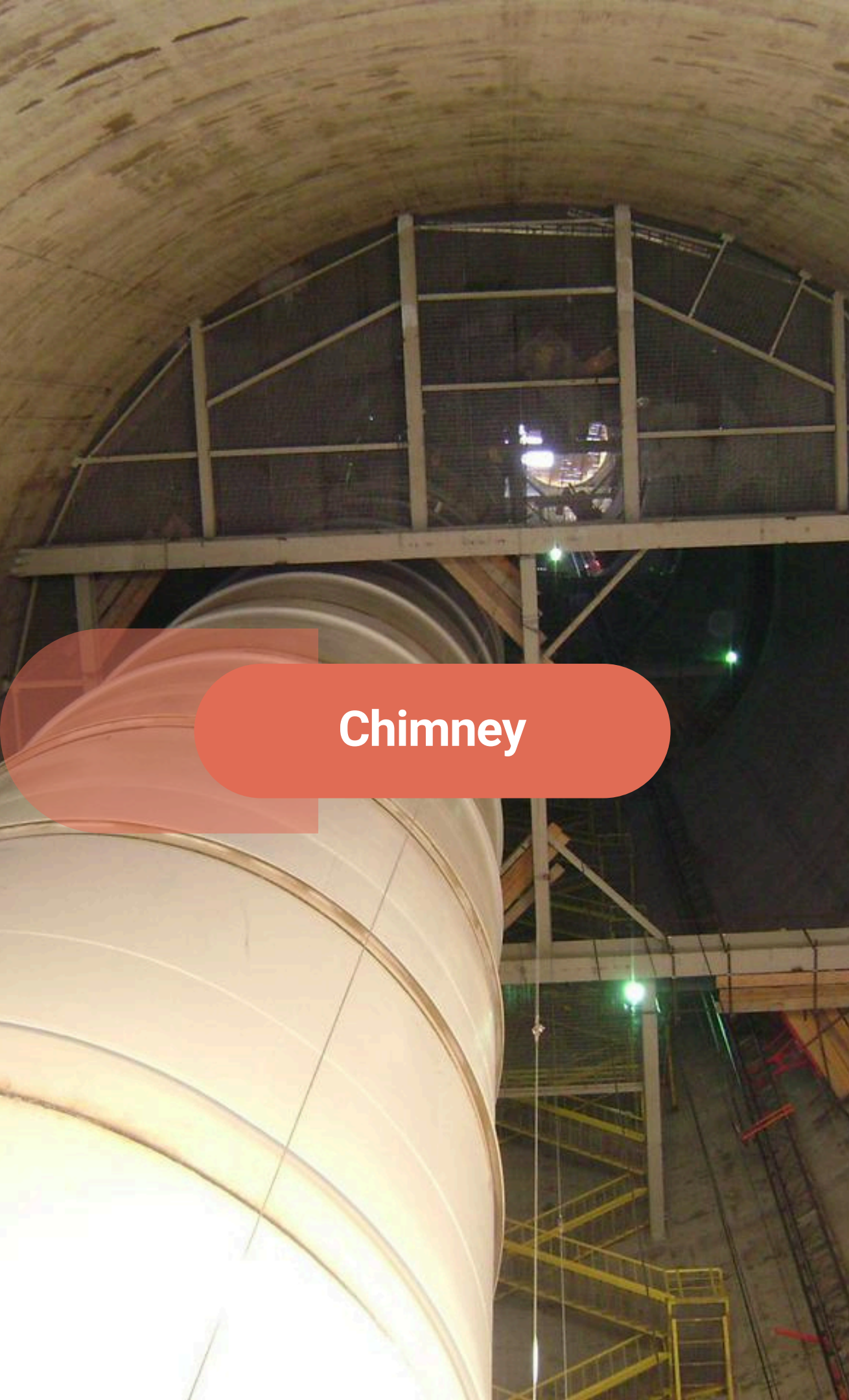
Power Plants





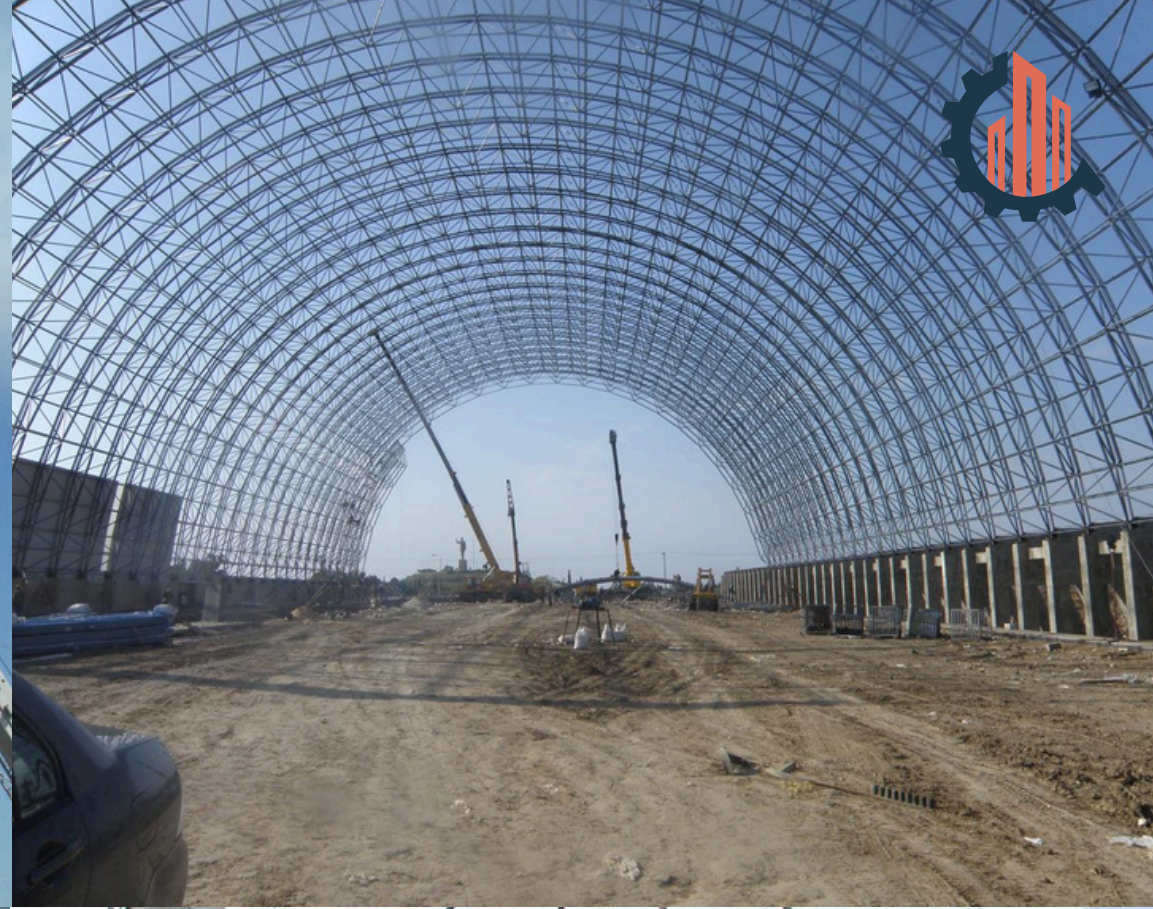
**Commercial
& Residential**





Chimney





Industrial





Infrastructure





Contact Us

Email: contact@toecon.me

Website: toecon.me

